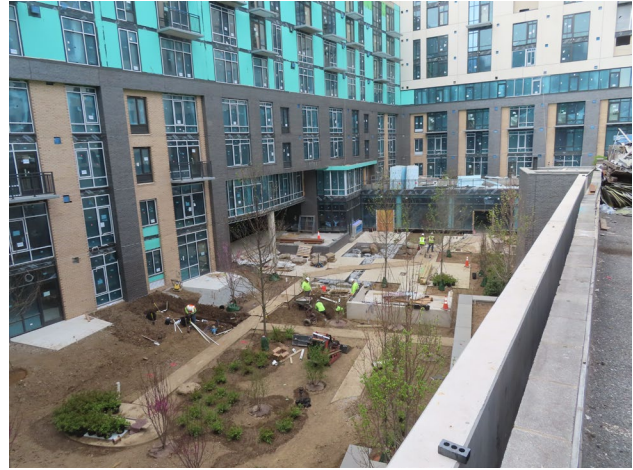


300 M Street NE Construction Document Review & Quality Assurance during Construction



425-unit multifamily/retail project consisting of a 12-story, post-tension concrete frame building with three levels of below-grade parking. Interior courtyard bridges parking and slab-on-grade construction. The exterior consists of a mixture of precast concrete barrier wall construction, brick veneer cavity wall construction and metal rainscreen panel construction. Fenestration consists of an aluminum frame, slab-edge bypass window wall system with storefront at the amenity/retail areas and entrances. The project is located in Northeast Washington, DC.

Challenge: Provide overall technical review of the construction documents related to waterproofing, building envelope (air barriers, cladding, fenestration and roofing) at critical design phases while emphasizing constructability and economy. Implement construction phase quality assurance program to address building envelope components and system installations.

Value Added: D&A's technical review of the construction documents identified issues with integration of waterproofing systems with air barrier components, veneers and cladding. D&A assisted with the complex detailing required at the transition between precast concrete panels, air barriers and waterproofing. During construction, D&A's timely on-site reviews at critical stages ensured integrity of the building envelope was maintained.

Service performed: Technical review of construction documents (drawings and specifications); quality assurance during construction.

Client/Developer: LCOR
Architect: WDG Architecture

Contractor: Hitt Contracting
Duration: 2020 - Present